

CUSTOM. QUALITY. SERVICE.

Custom Pole Buildings/Garages & Exterior Home Improvements



ROCKY MOUNTAIN

CONTRACTORS LLC

- ✓ Fully Licensed and Insured
- ✓ General Contractor
- ✓ Free Blueprints
- ✓ 10 Yr Warranty

3563 Mahantongo Creek Road | Dalmatia, PA 17017

merv@rockymtncontractors.com

717-979-5005

rockymtncontractors.com



CONTENTS

2-Car Garages	3
2-3-4 Car Garages	4
Garages with Porches	5
Photo Gallery	6
Financing	7
Options	8
Foundation Options	9
6 Steps to Prepare	10
Floor Plans	11
Base Prices/Construction Standards	12
Building Options	13
Exterior Home Improvements	14
Color Choices	16-17
Vinyl Siding	18
Windows & Doors	20
GAF Shingles	22

ABOUT US

The roots of our family business began when our parents broke ground on the Mahantango Mountain in 2004... and hit massive rocks. The name Rocky Mountain Structures was born.

They started off with a line of playhouses, sheds, and garages. In 2008 the construction demand brought opportunities to start a pole building crew.

After being an employee for six years, Merv married into the family. So, with Dad ready to lessen his workload, he offered the pole building division to his new son in law in April, 2022. Therefore Rocky Mountain Contractors was started, with the same family values and aspiration to give each customer a great experience.

We specialize in building custom pole buildings and garages. No project too small, we have you covered.

In 2023 we expanded our line of work that we offer to exterior home improvements which includes, new and reroofing, siding, timber frame porches and pavilions, etc.

OUR MISSION

To provide quality products and services to our customers while building relationships that last a lifetime.



2 CAR GARAGES



(P101) 30' X 40' X 10' - 1,200 SQ. FT.

- 2 - 9' x 9' Insulated Garage Doors
- 1 - 36" 9-Lite Entry Door
- 12" Eave & Gable overhangs
- 2 - 36" x 40" Windows
- Double Bubble (Condensation barrier)
- Green Posts
- 4" Cement Floor
- Clay Siding • White Trim & Charcoal Roof

Base Price \$18,263 • With Options \$33,990

(P102) 24' X 32' X 10' - 768 SQ. FT.

- 2 - 9' x 8' Uninsulated Garage Doors
- 1 - 36" 9-Lite Entry Door
- 36" Wainscoting
- 4" Cement Floor
- Ash Grey Siding • Colonial Red Roof, Trim & Wainscoting

Base Price \$15,575 • With Options \$22,809



(P103) 28' X 30' X 10' - 840 SQ. FT.

- 2 - 10' x 8' Carriage Style Garage Doors
- 6 - 36" x 40" Windows
- Green Posts
- Snowguards & Seamless Rain Gutters
- Double Bubble (Condensation barrier)
- Clay Siding • Bronze Roof & Trim

Base Price \$15,225 • With Options \$30,282

(P104) 24' X 32' X 10' - 768 SQ. FT.

- 2 - 9' x 8' Carriage Style Garage Doors
- 4 - 36" x 40" Windows
- 12" Eave & Gable Overhangs
- 4" Cement Floor
- Vinyl Siding
- Snowguards & Seamless Rain Gutters
- Montana Suede Vinyl Siding • White Trim • Textured Bronze Roof

Base Price \$15,575 • With Options \$26,135



2-3-4 CAR GARAGES



(P105) 30' X 40' X 12' - 1,200 SQ. FT.

- 1 - 36" Entry Door
- 3 - 10' x 10' Insulated Garage Doors
- 2 - 36" x 40" Windows
- 4" Cement Floor with Outside Apron
- Beige Siding • White Trim • Brown Roof

Base Price \$21,505 • With Options \$37,475

(P106) 24' X 48' X 10' - 1,152 SQ. FT.

- 4 - 9' x 8' Carriage Style Doors
- 3 - 36" x 40" Windows
- 12" Eave & Gable Overhangs
- 36" Wainscoting
- 36" Cupola
- Snow Guards & Seamless Rain Gutters
- 5" Cement Floor with 4' x 48' Outside Apron
- Double Bubble (Condensation Barrier)
- Green Posts
- Bone White Siding • Slate Blue Trim & Wainscoting • Pewter Grey Roof

Base Price \$18,750 • With Options \$44,515



(P107) 30' X 56' X 16' - 1,680 SQ. FT.

- 2 - 10' x 8' Insulated Garage Doors
- 1 - 12' x 14' 6" Insulated Garage Doors
- 2 - 36" x 40" Windows
- 5" Cement Floor with 4' x 56' Outside Apron
- Stone Veneer • Perma Columns
- 12" Eave & Gable Overhangs
- Snow Guards & Seamless Rain Gutters
- 12" Eave & Gable Overhangs
- Ash Grey Siding • Pewter Gray Trim & Roof

Base Price \$36,952 • With Options \$74,955

(P108) 30' X 40' X 10' - 1,200 SQ. FT.

- 3 - 9' x 8' Carriage Style Garage Doors
- 1 - 36" x 40" Window
- 4" Cement Floor
- Stone Veneer Wainscoting
- Snowguards & Seamless Rain Gutters
- Clay Siding • Bronze Roof & Trim

Base Price \$18,263 • With Options \$39,978



GARAGES WITH PORCHES



(P109) 30' X 40' X 10' - 1,200 SQ. FT.

- 1 – 20' x 9' Garage Door
- 3 – 36" x 40" Windows
- 4" Cement Floor
- 12" Eave & Gable Overhangs
- 8/12 Pitch Truss
- 12' x 20' Porch with Cement Floor
- Snowguards & Seamless Rain Gutters
- Light stone Siding • White Trim • Bronze Roof

Base Price \$18,263 • With Options \$54,320

(P110) 30' X 36' X 10' - 1,080 SQ. FT.

- 10' x 30' Porch with Soffit & Vinyl Post Sleeves
- 2 – 9' x 8' Insulated Garage Doors
- 4 – 36" x 40" Windows
- 12" Eave & Gable Overhangs
- 36" Wainscoting
- Green Posts
- Ash Grey Siding with Pewter Gray Trim & Roof

Base Price \$17,595 • With Options \$34,145



(P111) 40' X 60' X 12' - 2,400 SQ. FT.

- 1 – 16' x 10' Garage Door
- 3 – 36" x 40" Windows
- 5" Cement Floor
- Green Posts
- 36" Wainscoting
- Interior Insulated with Metal Ceiling
- Snowguards & Seamless Rain Gutters
- 9' x 60' Porch with Cement Floor
- Pewter Grey Siding • Black Roof & Trim & Wainscoting

Base Price \$35,085 • With Options \$83,020

(P112) 30' X 40' X 10' - 1,200 SQ. FT.

- 2 – 9' x 8' Insulated Garage Doors
- 1 – 6' Double Door
- 4 – 36" x 40" Windows
- 12" Gable overhangs
- 10' x 10' Timber Framed Concrete Front Porch
- 36" Wainscoting
- 36" Cupola
- 4" Cement Floor
- Snowguards & Seamless Rain Gutters
- Ash Grey Siding with Pewter Gray Trim & Roof

Base Price \$18,263 • With Options \$38,270



PHOTO GALLERY





HEARTH

FLEXIBLE FINANCING

Rocky Mountain Contractors has partnered with Hearth to offer flexible financing solutions, helping you get the home improvements you need without the financial strain. With quick approvals and affordable monthly payments, you can start your project now and pay over time—on a schedule that works for you.



VIEW YOUR MONTHLY PAYMENT OPTIONS IN MINUTES

Get real loan offers tailored to your project without impacting your credit score—no commitment required.



NO HOME EQUITY REQUIRED

Unlike traditional financing, Hearth's options are unsecured, so you don't need to use your home as collateral.



NO PREPAYMENT PENALTIES

Pay off your loan early if you'd like—without any fees or hidden charges for doing so.



LOANS AVAILABLE UP TO \$250,000

Whether your project is big or small, flexible loan options make it easier to cover your costs.



AFFORDABLE MONTHLY PAYMENT OPTIONS

Choose a payment plan that works for you, so you can invest in your home without financial stress.



FAST FUNDS, IN AS LITTLE AS 1-3 BUSINESS DAYS

Once approved, you can get the funds you need quickly and move forward with your project right away.



EASY, SECURE APPLICATION PROCESS

Apply online through Hearth's simple platform—no long forms or complicated paperwork.

OPTIONS



GUTTERS WITH LEAFGUARD



SNOW GUARDS



METAL FINISHED INTERIOR



DOUBLE BUBBLE (CONDENSATION BARRIER)
A POPULAR ROOF OPTION. ALSO GREAT IDEA FOR WALLS.



ATTIC STORAGE



INSULATED WALLS/METAL CEILING

FOUNDATION OPTIONS

Standard Post Spacing is 8 ft.

Set on Precast Footers 42" Below Ground Level for Optimum Frost Uplift Protection



SOLID SAWN POSTS

**Standard on Buildings
with 8', 10', 12' Walls**

Solid sawn posts are just as their name suggests. Our 4' x 6' posts are sawn from solid wood and treated with .60 (ground contact) treatment.



GLULAM POSTS

**Standard on Buildings
with 14' or higher Walls**

Glued-laminated timber, or GluLam, is a timber product manufactured from dimensional lumber, called laminating stock. This laminating stock comes in 2" nominal thickness and varying widths. The lamstock is finger-jointed together end to end, then glued together in laminations using waterproof, state of the art adhesives, creating a high strength-to-weight ratio. They are known for their strength, straightness, and resistance to twisting and warping. That means they are great for taller buildings, or cases involving high wind and/or snow loads.

The bottom 6' are treated for ground contact. 3-Ply 2'x6' GluLam Posts are our standard. 4 or 5 ply posts are used on largest commercial buildings based on building code regulation.



THE GREEN POST

Option #1 — Our Most Popular Grade

The most affordable in-ground solution to post decay, the Green Post provides superior protection from the harmful effects of concrete, microorganisms, corrosive soils agents, soil nutrients, moisture, and oxygen that can cause rot and post failure.

Four features give the Green Post it's strength: 1) the bottom 6 ft or the entire post is treated for ground contact, 2) the bottom of the post is notched to maximize uplift restraint, 3) the post is coated with a protective layer of bituminous coating that has been used in resisting rot for over a thousand years, and 4) the chemical treatment and bituminous coating are sealed around the post with a polyethylene membrane that protects the soil and the post.

Factory-applied heat-shrunk double layer Polyethylene wrap with uplift restraint notches

BLOCK FOUNDATION

Flexible and Long-Lasting

Block foundations offer a strong, durable base that stands up to heavy loads and changing weather. Their natural resistance to fire, moisture, and pests makes them a reliable choice for long-term performance.

With their hollow-core design, block foundations make it easy to reinforce with rebar or run utilities where needed. They're also great for building up height on sloped lots or creating extra clearance—giving you both strength and versatility for your garage project.



6 Steps to Prepare for Your **BUILDING PROJECT**

STEP 1:

Sign a contract for your desired building project and provide a 25% deposit.

STEP 2:

Apply for a zoning permit from your township. (All new construction projects will require a zoning permit.) We will supply detailed drawings for submission if needed.

A zoning permit is essentially the township or borough granting you permission to proceed with the project.

Note: We offer permit application services for an additional charge.

STEP 3:

After receiving the zoning permit, apply for the building permit. (Not all new construction requires one; confirm with your township or borough if it is needed.) We will supply detailed drawings for submission if needed.

A building permit ensures that your project complies with the building codes in your area.

Note: We offer permit application services for an additional charge.

STEP 4:

Email or mail a copy of both permits to us at Rocky Mountain Contractors LLC. We need these permits before starting construction to schedule inspections, if required.

STEP 5:

Prepare the site. Feel free to do this yourself or hire an excavator. Rocky Mountain Contractors offers excavating services as well.

- If filling a low spot, use clean fill dirt or modified stone—avoid large rocks, loose stone, or gravel. Failure to properly fill low areas may result in additional charges.
- We recommend making the building pad 2 - 4 feet wider on all sides than the building's dimensions.
- The 2B stone for under the concrete should be delivered to an accessible location within 25–100 feet of the building site. (You are responsible for acquiring the 2B stone unless otherwise arranged with us.) **We will move the 2B stone inside the building during construction.**
- **It is the homeowner's responsibility to verify that no underground utilities are present.** If utilities are marked, we will do our best to avoid them; however, any damage that occurs remains the homeowner's responsibility to repair.
- **An 811 call must be made by the homeowner within 14 days of the project start date.** Extra charges may apply if utilities are in the way or are damaged.
- Additional charges may apply if rocky soil causes delays beyond our normal drilling rate of eight holes per hour.

STEP 6:

Sit back and relax while we complete your project!



ROCKY MOUNTAIN

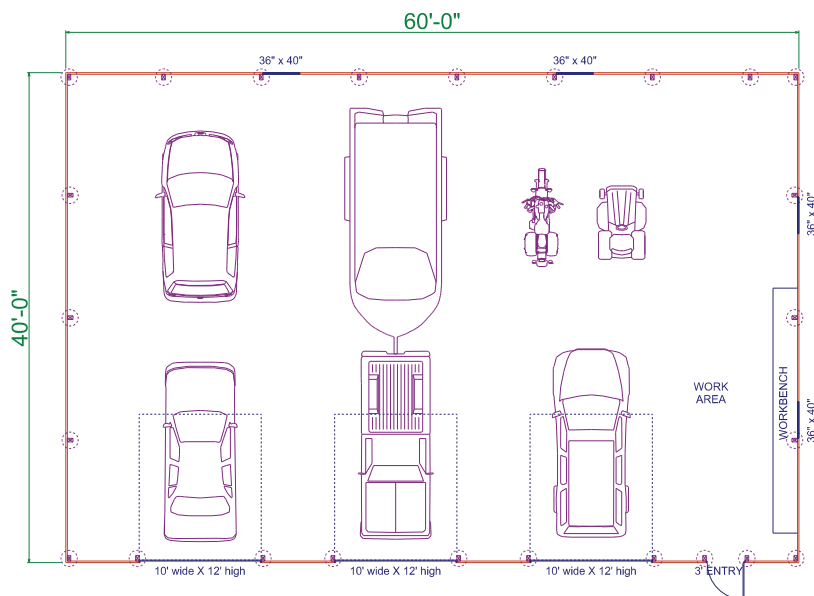
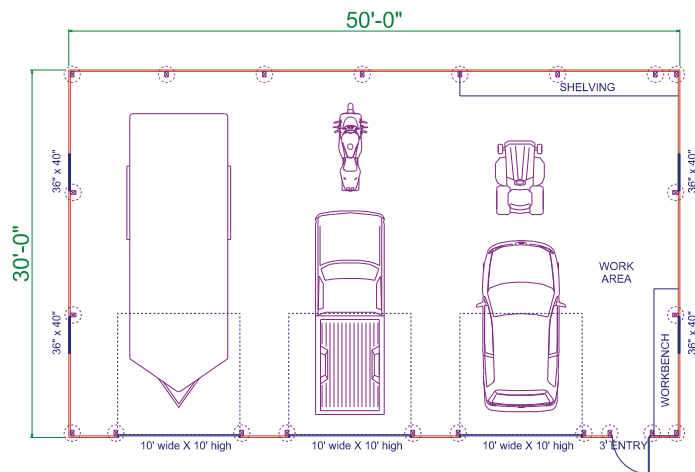
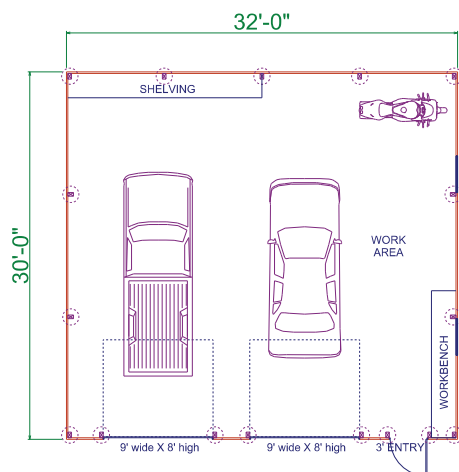
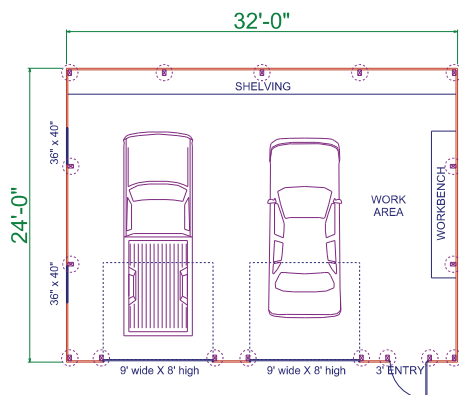
CONTRACTORS LLC

717-979-5005

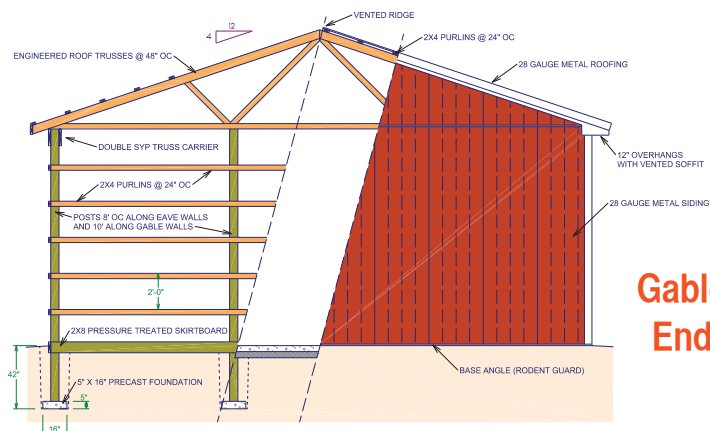
FLOOR PLANS

WHEN YOU BUILD ... BIGGER IS BETTER!

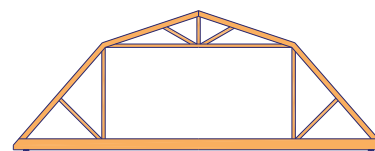
Most folks underestimate future storage needs. Take a look at some of our Floor Plans to help you get an idea what size building you may need.



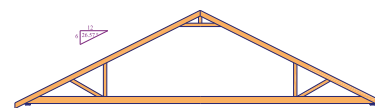
**ARCHITECTURAL DRAWINGS
FREE!**



**Gable
End**



Gambrel Attic Truss



6 Pitch Attic Truss

OUR BLUE PRINTS & INSURANCE CERTIFICATES HELP MAKE
YOUR BUILDING PERMIT PROCESS A BREEZE!

BASE PRICES

ALL PRICES SUBJECT TO CHANGE WITHOUT NOTICE.

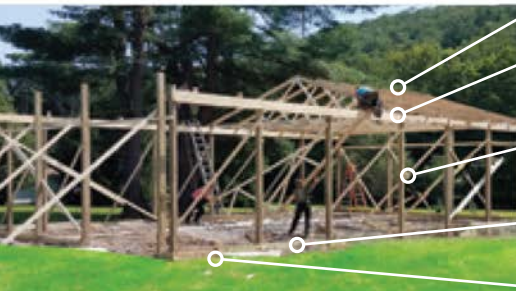
24' x 24' x 8' \$12,865
 24' x 32' x 10' \$15,575
 24' x 40' x 10' \$17,280
 30' x 32' x 10' \$17,120
 30' x 40' x 10' \$18,263
 30' x 48' x 10' \$21,662

30' x 50' x 12' \$24,615
 30' x 60' x 16' \$40,470
 32' x 48' x 10' \$22,647
 32' x 60' x 12' \$26,317
 36' x 48' x 12' \$27,696
 36' x 60' x 16' \$43,032

40' x 60' x 10' \$28,995
 40' x 60' x 12' \$35,085
 40' x 60' x 14' \$41,970
 40' x 60' x 16' \$46,350
 50' x 100' x 16' \$78,315
 60' x 120' x 14' \$100,380

PRICES INCLUDE:

- 1 — 9' x 7' Garage Door
- 36" 9-Lite Entry Door
- 12" Vented Eaves
- Vented Ridge
- 28 Gauge Metal Roofing & Siding
- Tax Included
- Installation & Trash Removal



HIGH QUALITY CONSTRUCTION STANDARDS

- ✓ Engineered Trusses at 48" Spacing.
- ✓ #1 Yellow Pine Double-Ply Headers—The Strongest Wood Available.
- ✓ .60 Treated 4" x 6" Post up to 12' walls, 3-Ply 2' x 6' GluLam Post 14' and Higher Walls.
- ✓ .60 Treated 2" x 8" Skirtboard.
- ✓ Extra Strength Precast Footers set at 42" below Ground Level
- ✓ 28 - GA. G-100 Metal Roofing and Siding Heat-Formed with a 40 year Warranty.
- ✓ Kiln Dried 2" x 4" Roof & Side Purlins at 24" spacing.
- ✓ Never-Rust Fiberglass 9-Lite Entry Door Insulated with Grids Between the Glass.
- ✓ 12" Vented Eaves & Vented Ridge—No Upcharge
- ✓ High Quality CHI Garage Doors, Lifetime Warranty Against Rust.



10 Year Top to Bottom Warranty
 The Best in the Industry

BUILDING OPTIONS

WINDOWS

- 36" x 40" Vertical Single Hung with Grids 425 ea.
Our windows come insulated with screens

OVERHEAD DOORS

High-Quality CHI Doors with Torsion Springs

	Non-Insulated	Vinyl-Backed R 7.9 Insulated	Steel-Backed R 9.6 Insulated
▪ 9'x7'	1043.02 ea.	1315.90	1587.28
▪ 9'x8'	1262.00 ea.	1562.68	2042.04
▪ 9'x9' & 10'x9'	1818.18 ea.	2303.72	2962.54
▪ 10'x10' & 10'x12'	2282.38 ea.	2852.98	
▪ 12'x12' & 16'x8'	2532.04 ea.	3173.28	
▪ 12'x14' & 14'x14'	3889.64 ea.	4878.68	6255.40
▪ 675 credit to change from a 9'x7' to a larger door.			
▪ 45° Dutch Corners		110 per door	
▪ 1 Row of Windows in Overhead Door		220	
▪ Carriage Style Door Upgrade (Includes 1 Row of Windows)		436.70	
▪ Please specify door color: White, Brown, Clay, Almond			
▪ Sliding Door, any Size Available	\$12 sq. ft.	\$1400 min.	
▪ Double Sliding Door, any Size	\$15.73 sq. ft.	\$1700 min.	
(All Sliding Doors are Constructed with 20 Gauge Steel Framing)			

ENTRY DOORS: FIBERGLASS

- 36" 9-Lite or Solid Door 725 ea.
- 72" Double 9-Lite or Solid Doors 1,475 ea.
- Deadbolt add 82.50
- Painted Doors add 220

SIDING

- Wainscoting (two-tone sides) 6.60 lin.ft.
- Eave Side Lights (white or clear) 13.20 sq.ft.
- Lifetime Warranty Vinyl Siding 3.30 sq.ft.
- Tyvek under Vinyl Siding .55 sq.ft.
- Shutters 66 per set

CUPOLAS

- 24" Louvered Style 632.50 Windows 825
 - 36" Louvered Style 907.50 Windows 1182.50
 - 48" Louvered Style 1402.50 Windows 1815
 - 30" Weather Vanes 126.50
- (Rooster, Eagle, Horse, etc. - More Options Available)

FINISHED INTERIORS

- Metal Ceiling with R-30 Cellulose 4.29 sq.ft.
- White Poly Interior Lining with R-19 Fiberglass 5.50 sq.ft.
- Metal Interior Lining with R-19 Fiberglass 7.25 sq.ft.
- Trim Out Windows and Entry Doors w/White Poly 93.50 ea.
- Cut Around Electrical Outlets & Lights 11.00 ea.
- Ceiling Access Door 2'x4' Insulated 302.50 ea.

ROOFS 12" VENTED EAVE OVERHANGS INCLUDED

- 12" Vented Gable Overhangs 17.60 lin.ft.
- Extend Overhangs from 12" to 24" 22.00 lin.ft.
- 6/12 Pitch Attic Trusses, 35 PSF Storage Loading 5.23 sq.ft.
- 7/12 Pitch Attic Trusses, 35 PSF Storage Loading 5.50 sq.ft.
- 8/12 Pitch Attic Trusses, 35 PSF Storage Loading 6.33 sq.ft.
- Gambrel Attic Trusses, 35 PSF Storage Loading 13.20 sq.ft.
- 3/4 T&G OSB Attic Flooring with 1/2" OSB on sides 6.33 sq.ft.
- 36" Stairs with Railing 632.50
- 36" L-Stairs with Railing 880
- Lifetime Warranty Shingled Roof 3.30 sq.ft.
(Includes Truss Spacing 24" OC, 5/8" Roof Sheathing & 15 lb. Felt Paper)
- Skylight (White or Clear Panel) 6.60 sq.ft.
- 5" Seamless Gutters and Downspouts 8.25 lin.ft.
- Stainless Snow Guards (protects your gutters) 10.25 ea.
- Leaf Guards for Rain Gutters 4.68 lin.ft.
- R-7 Double Bubble Insulation (Condensation Barrier) 1.38 sq.ft.
- ZXL 40-Year Warranty Screws .33 sq.ft.
- Upgrade to 26 Gauge Textured Metal 1.00 sq. ft.

POSTS

- 3-Ply 2'x6' Glu-lam Posts for Walls under 12' High 35 / post
- Green Posts (Heat Shrink Rubber Coated) 55 / post

FLOORS

- 4" Cement Floor 4000 psi 4.75 sq.ft.
- 5" Cement Floor 4000 psi 5.00 sq.ft.
- 6" Cement Floor 4000 psi 5.50 sq.ft.
- Apron 4" Cement (minimum charge is \$1584.00) 8.00 sq.ft.
- 6 mil Plastic (Vapor Barrier) .35 sq.ft.
- Fiber in Cement .39 sq.ft.
- Wire Mesh .72 sq.ft.
- 6" Round Floor Drain with 2" Pipe to the Outside 357.50
- 4"x48" Trench Drain 467.50



ELEVATING YOUR HOME'S EXTERIOR

EXTERIOR HOME IMPROVEMENTS

Rocky Mountain Contractors provides exterior home improvements that enhance both the appearance and functionality of your property. From porches and pavilions to seamless gutters, siding, and roofing, our services focus on quality and attention to detail. Whether you're adding a pavilion, updating your roof, or refreshing your home's exterior, we guide each project from start to finish.

Our team works with durable materials and reliable methods to ensure results that meet your needs and expectations. Let us help you create an exterior that fits your style and goals.

JOBS WE TACKLE:

- Roofing
- Siding
- Seamless Gutters
- Garage Additions
- Porches
- Pavilions
- And More!





"GREAT TO WORK WITH!! PATIENT AND ANSWERS ALL QUESTIONS AND OFFERS VALUABLE INPUT. I WILL DEFINITELY USE ROCKY MOUNTAIN CONTRACTORS AGAIN." —JOE KOBULARIK, PA

COLOR CHOICES

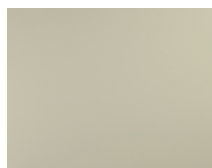
ABM Panel

28 Gauge Galvanized or Galvalume

Dot (•) identifies colors also available in 26 Gauge Galvalume



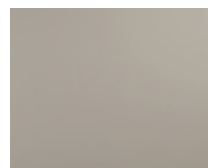
Bright White (WH)



Light Stone (LS)



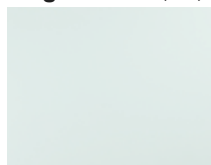
Beige (BG)



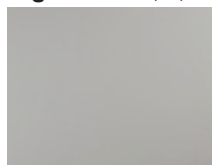
Clay (CL)



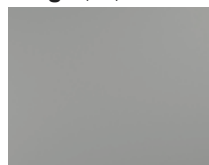
Tan (TN)



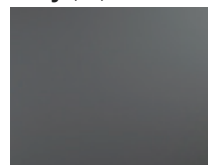
Bone White (BW)



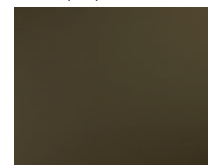
Ash Gray (AG)



Pewter Gray (PG)



Charcoal (CH)



Bronze (BZ)



Scarlet Red (SR)



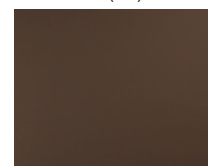
Barn Red (RD)



Colonial Red (CR)



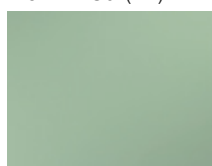
Burgundy (BU)



Brown (BN)



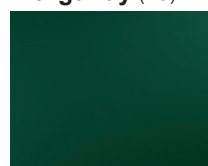
***Gold** (GL)



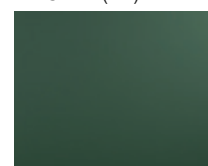
***Patina Green** (PA)



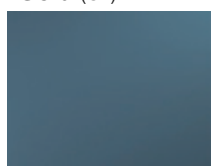
***Avocado Green** (AV)



Forest Green (FG)



Evergreen (EG)



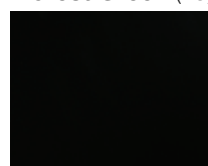
Slate Blue (SB)



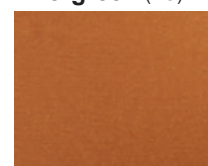
Gallery Blue (GB)



***Dark Blue** (DB)



Black (BL)

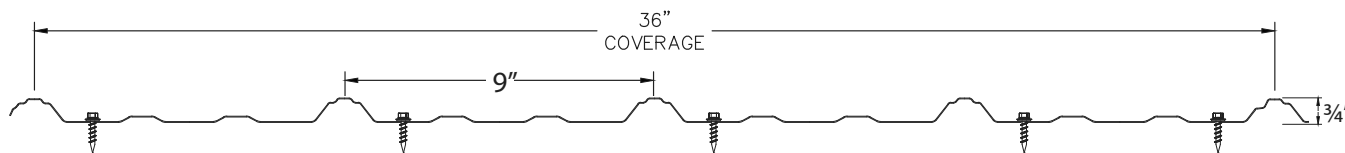


***1 Copper Penny** (CP)

36" Wide Coverage • 9" Rib Spacing • 3/4" High Rib

ABM Panel Profile (Acc)

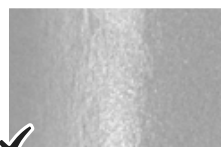
*Only available with Galvalume Panels.
*Premium Color at Additional Cost.



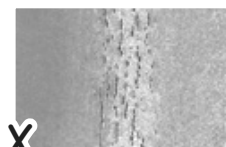
There's good reason why we've been Heat Forming for more than a decade!

The details matter... even if you need a microscope to see them. We heat-form the ABM Panel to prevent microscopic cracking of the rust-preventing paint coating as the panel is formed. Heating the panel before bending temporarily softens the paint which allows it to flex as the panel is formed and shaped.

(MAGNIFICATION OF MAJOR RIB)



Heat-formed Panel



Cold-formed Panel

We strive to make our color charts as precise as possible, but the accuracy of the painted chips is not guaranteed. For 100% color matching, please request a free metal sample.

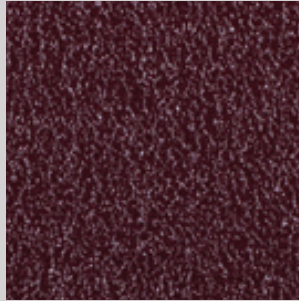
COLOR CHOICES



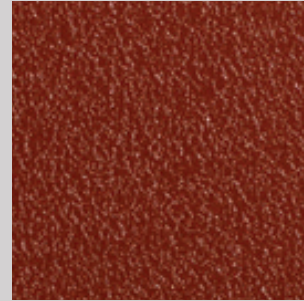
26 Gauge Textured AZ50 Galvalume



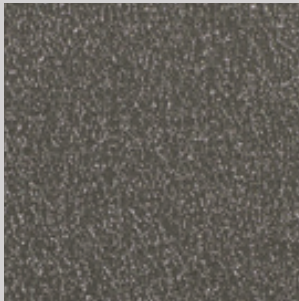
Bronze (TBZ)



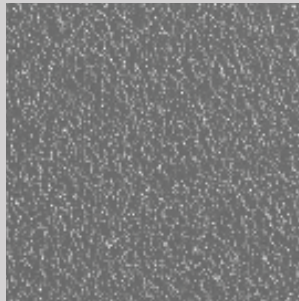
Burgundy (TBU)



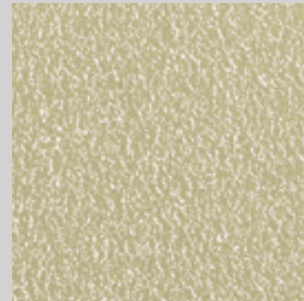
Colonial Red (TCR)



Charcoal (TCH)



Ash Gray (TAG)



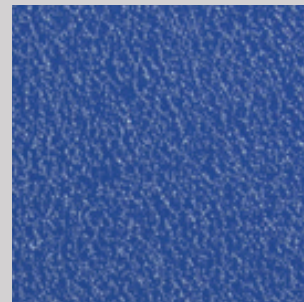
Light Stone (TLS)



Black (TBL)



Evergreen (TEG)



Gallery Blue (TGB)

We strive to make our color charts as precise as possible, but the accuracy of the painted chips is not guaranteed. For 100% color matching, please request a free metal sample.

Available in Multiple Panel Profiles

WHY CHOOSE TEXTURED?

Our textured panels continue to be a popular choice for residential applications. Homeowners appreciate the unique surface, which redirects sunlight for less glare compared to smooth panels. The texture also helps minimize "oil canning," resulting in a more attractive roof. Contractors like the added grip the texture provides during installation. And because the textured coating is baked into the metal coil at the factory, our textured panels carry the same 40-year film integrity warranty as our smooth panels.





VINYL SIDING

Why Cedar Peaks® Stands Above the Rest

Most contractors default to thinner, economy-grade vinyl siding—but Cedar Peaks® gives your project a premium edge. With its extra heft, real woodgrain texture, and fortified weather defenses, it's engineered to elevate both style and resilience. Rocky Mountain Contractors chooses Cedar Peaks® for homeowners who demand standout curb appeal, long-lasting beauty, and reliable performance—without compromise.

Key Features

- ✓ Thicker, Heavier-Duty Construction – 0.046"–0.050" vinyl thickness across four profiles (Double Lap, Double Dutch Lap, 6.5" Beaded, and 8" Board & Batten) delivers deep shadow lines, authentic woodgrain texture, and enhanced rigidity
- ✓ Super-Polymer Formula – Engineered with high-grade modifiers, SPX-2000 UV blockers, Tri-Pigment Reflective Technology, and Color-Keeper™ anti-fade protection for superior color retention and weather resistance
- ✓ Exceptional Impact & Wind Resistance – ASTM 4226 certified for >60 lb/ft hail impact, and wind-tested to handle up to 238 mph gusts—much stronger than typical vinyl options
- ✓ Authentic Cedar Aesthetic – Natural patina finish captures the look of cedar without the maintenance—no painting, staining, or caulking required
- ✓ Lifetime Limited Warranty – Backed by ProVia's lifetime warranty for fade, chalk, cracking, and more—ensuring long-term performance and peace of mind



"MERV & ROCKY MTN CONTRACTORS PROVED TO BE AN AWESOME COMPANY TO WORK WITH!!! THEIR ATTENTION TO DETAIL, QUALITY CRAFTSMANSHIP AND COMMUNICATION WERE SECOND TO NONE. THEY RESIDED BY CABIN AND BUILT A LARGE DECK. THEIR WORK HAS TOTALLY TRANSFORMED MY PORPERTY!!! I LOOK FORWARD TO OUR FUTURE PROJECTS TOGETHER." —ANDREW SMITH

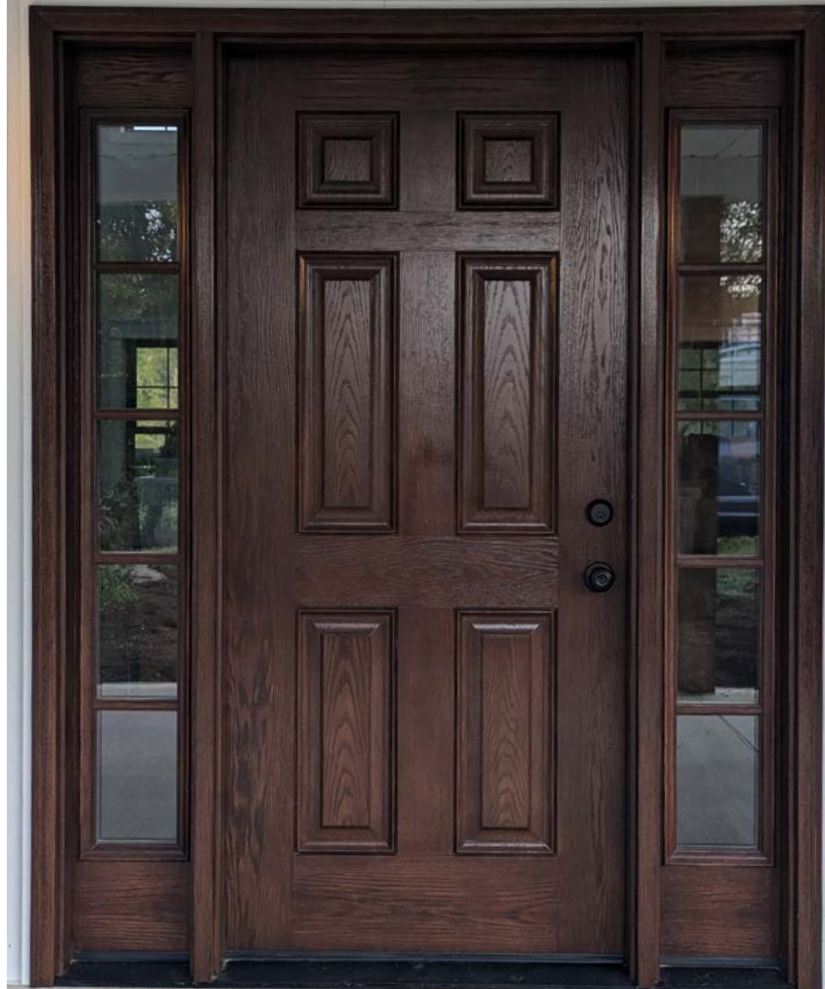


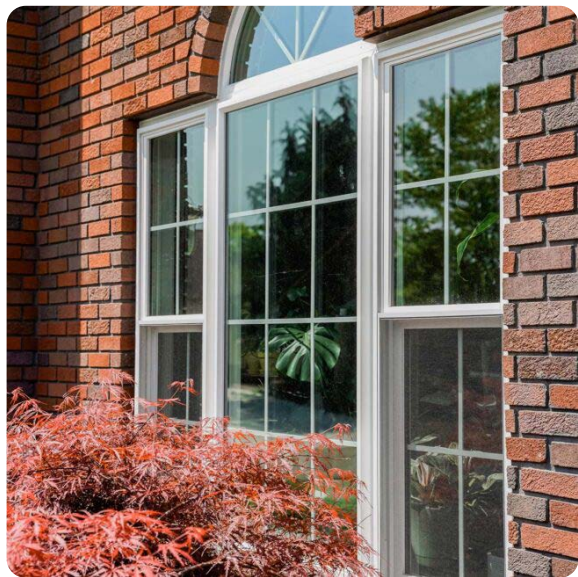
WINDOWS & DOORS

- ✓ **ENERGY EFFICIENT & QUIET** – Advanced glazing and gas-filled panes help lower energy costs and reduce outside noise.
- ✓ **BUILT TO LAST** – Durable SunShield® vinyl resists fading, cracking, and warping—no painting needed.
- ✓ **CUSTOMIZABLE STYLE** – Wide range of window styles, colors, woodgrain interiors, and decorative glass options.

At Rocky Mountain Contractors, we install ProVia's ENDURE® line of windows and patio doors—one of the best choices for energy efficiency and durability. ENDURE products feature SunShield® vinyl frames that resist fading, cracking, and warping, along with ComforTech™ Warm-Edge Glazing for superior insulation and noise reduction. These ENERGY STAR® certified windows help lower energy bills and keep your home comfortable year-round.

With a wide range of styles, interior woodgrain finishes, and exterior color options, ENDURE windows can be customized to match your home's look. Plus, with a lifetime transferable warranty, you'll have peace of mind knowing your investment is built to last.



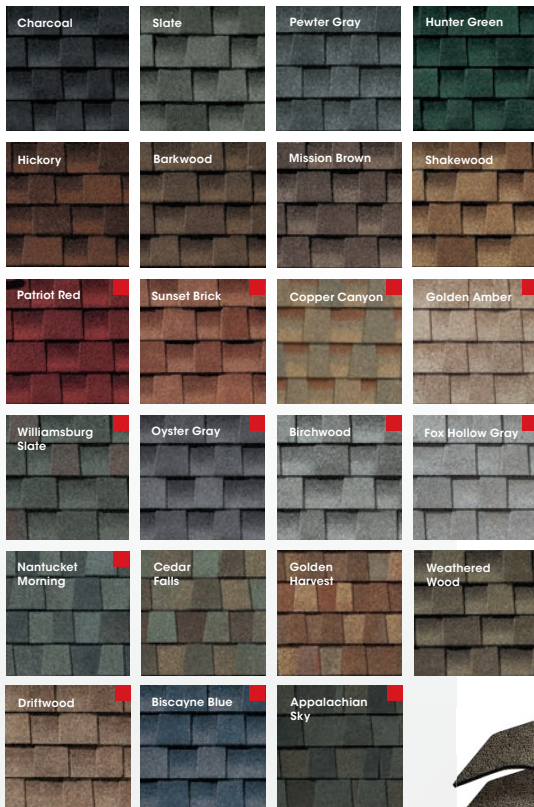


"OVER THE PAST ROUGHLY 20 YEARS I HAVE USED ROCKY MOUNTAIN FOR TWO GARAGES AND A LARGE SHED. THE START TO FINISH PROCESS HAS ALWAYS BEEN EXCELLENT. THE QUALITY AND WORKMANSHIP IS HANDS DOWN THE BEST AROUND. I HIGHLY RECOMMEND THEM FOR ALL YOUR CONSTRUCTION NEEDS." —BARRY BERTOLET





GAF

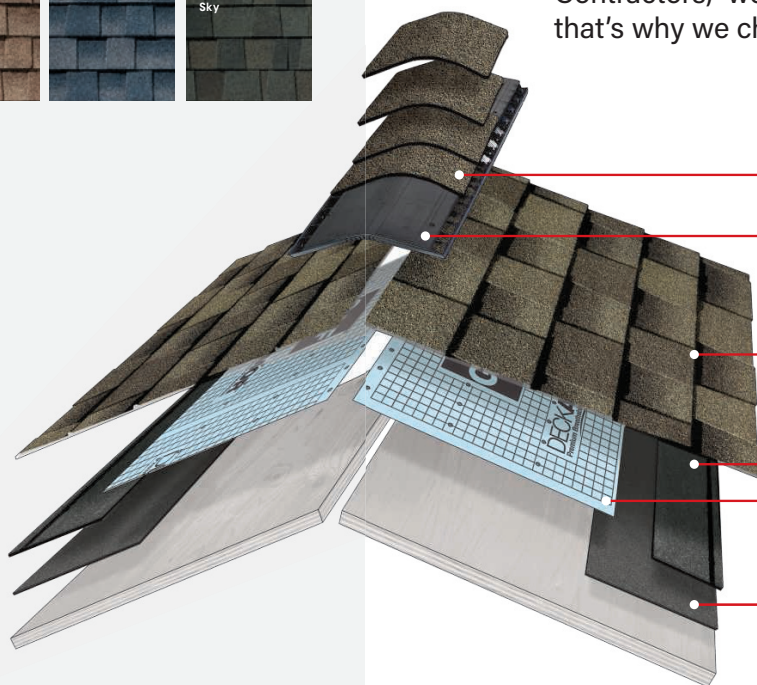


GAF Asphalt Roofing Shingles

EXCEPTIONAL DESIGN. UNMATCHED PROTECTION.

Choosing Rocky Mountain Contractors means getting more than just a roof—you're getting premium protection with GAF Timberline® HDZ® and UHDZ® shingles. While many contractors stick to thinner, entry-level shingles, we install some of the most durable shingles on the market. The result? A roof that not only looks better with deeper shadow lines and dimensional texture, but also performs better against wind, weather, and wear.

As GAF Certified™ installers, we meet strict standards for quality and professionalism, giving you added confidence in the installation process. GAF's advanced LayerLock™ Technology, along with their industry-first WindProven™ Limited Wind Warranty, gives you peace of mind knowing your roof is built to withstand extreme conditions. Plus, with stain-resistant technology and an impressive limited lifetime warranty, your investment is protected for years to come. At Rocky Mountain Contractors, we believe your home deserves the best—and that's why we choose GAF.



Ridge Cap Shingles



Attic Ventilation



Lifetime† Shingles



Starter Strip Shingles



Roof Deck Protection



Leak Barrier



"MERV AND HIS TEAM ARE AMAZING AT WHAT THEY DO. ASKING QUESTIONS AND WORKING THROUGH THE DETAILS TO GET ON THE SAME PAGE WAS SEAMLESS. THE CREW HAD THE BUILDING UP IN A TIMELY MANNER AND IT LOOKS AMAZING. HIGHLY RECOMMEND." —WILLIAM FAVINGER

We build it like it's our own—because it matters.



HOME OFFICE

3563 Mahantongo Creek Road
Dalmatia, PA 17017

merv@rockymtncontractors.com

717-979-5005

rockymtncontractors.com



ROCKY MOUNTAIN

CONTRACTORS^{LLC}

ADDITIONAL SALES LOT

389 Montour Blvd.
Bloomsburg, PA 17815

mwstrickler@gmail.com

570-784-9560

rockymtncontractors.com

